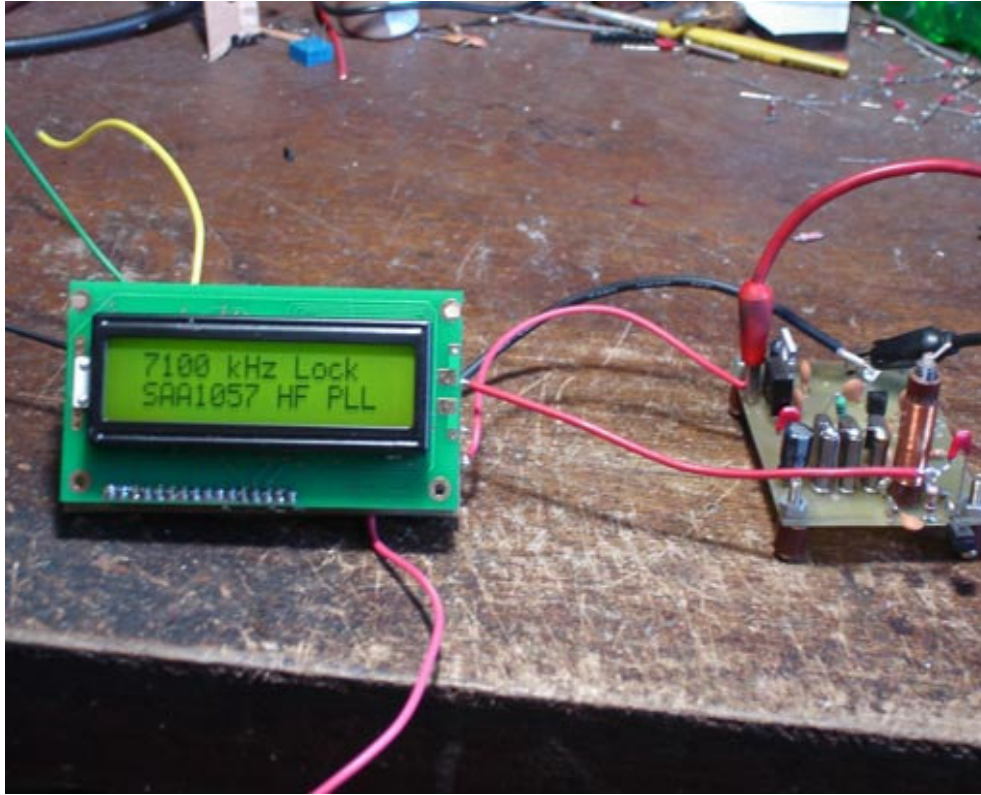


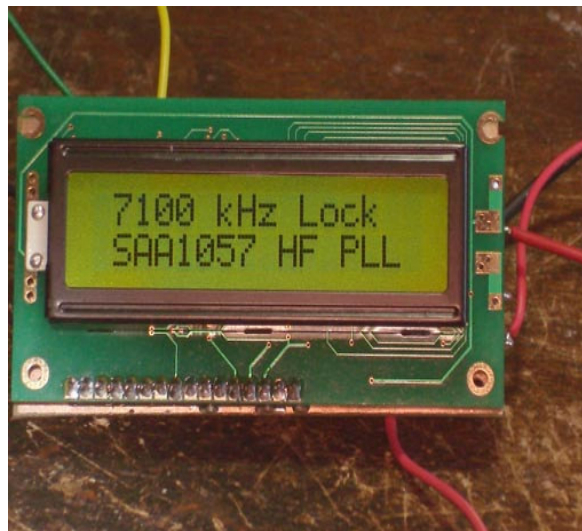
PLL HF PY2MG

Visite a página do link para esquemas e software:

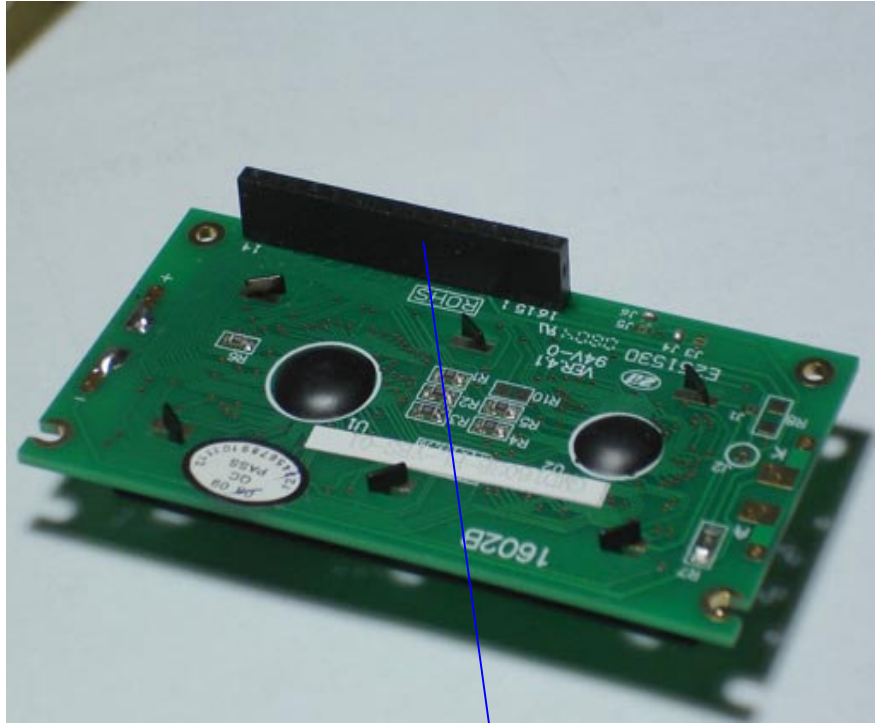
<http://doxical.free.fr/archives/Freddos%20electronic%20homepage/www.freddospace.nl/index.html>



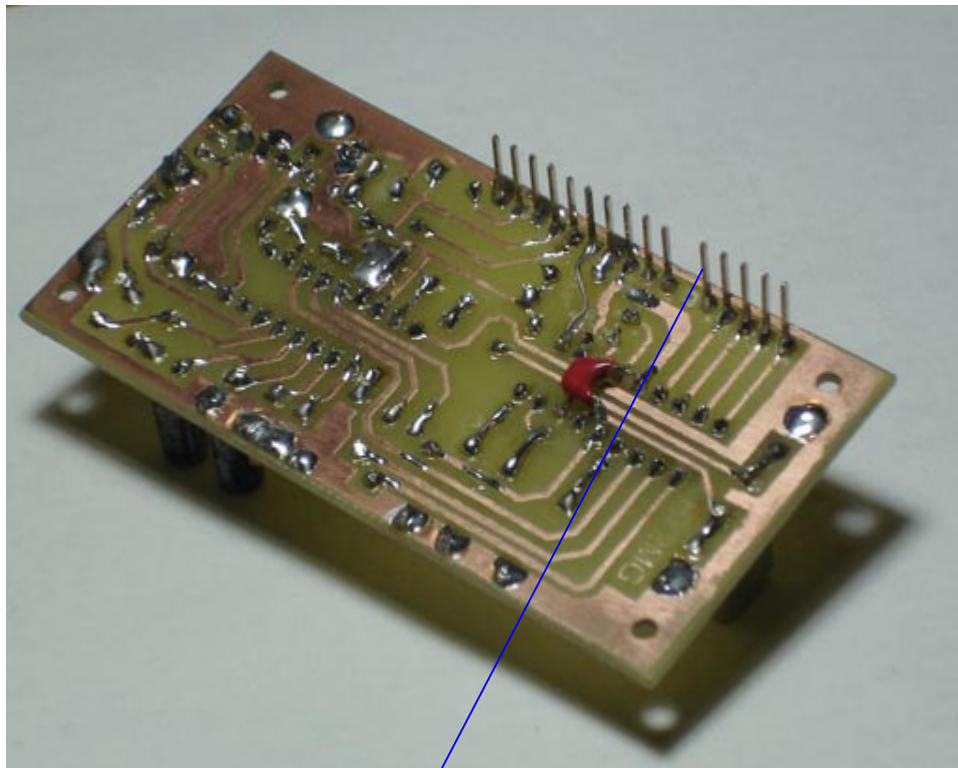
PLL trabalhando com o vxo do Maritaca



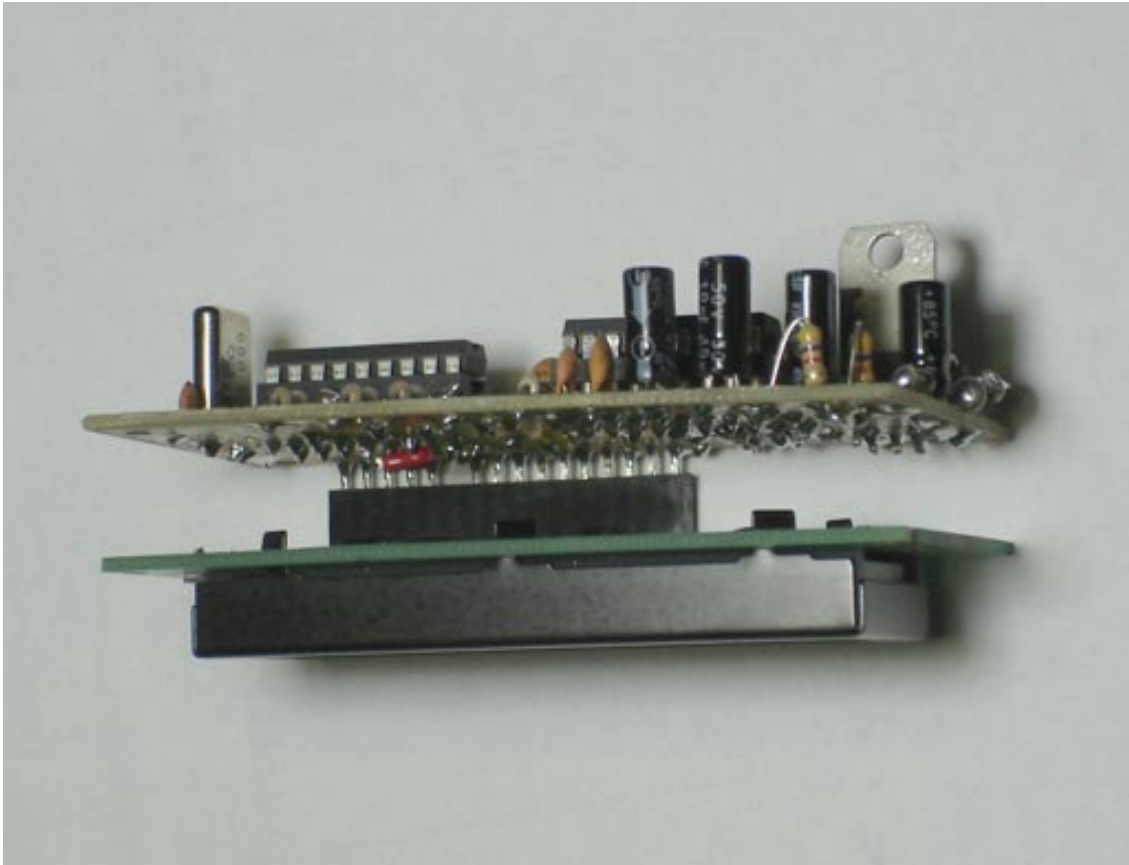
Vista do display mostrando a frequência de 7100 KHz travada



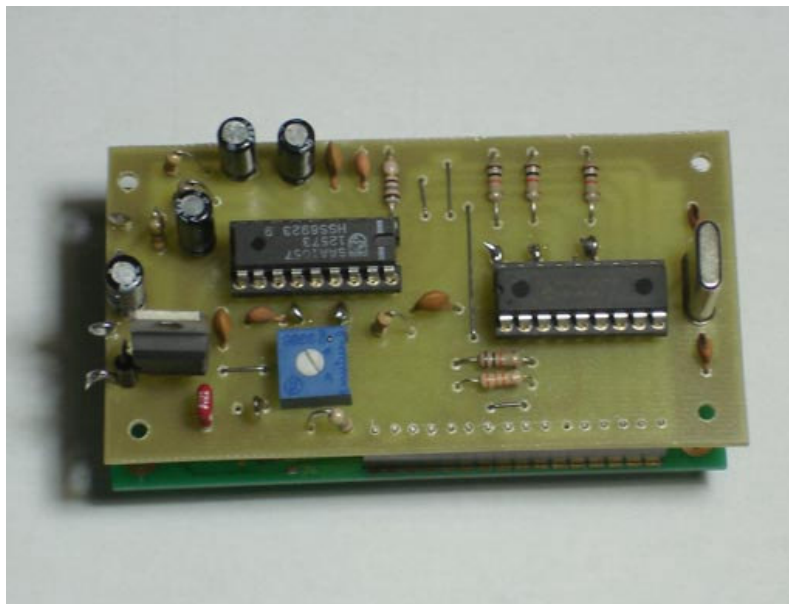
Soquete soldado ao display



Pinos soldados à placa



Controlador “soquetado” ao display



Controlador lado dos componentes