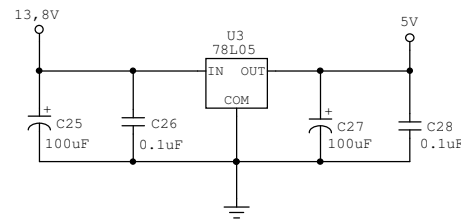


L1 e L2= 5 ESPIRAS FIO 18AWG COMPRIMENTO 16MM
TAP 1 ESPIRA DO LADO TERRA, FORMA 5 MM

L3= 3 espiras fio 18AWG
Diâmetro da forma 8mm

L5= BOBINA DE QUADRATURA 455KHZ



144RX2 Receptor para 2 metros	
Original by PY2EAJ Euclides Drawn & Mods by PY2MG Gomes	
Rev 0	ID 144RX2
Date: 19 ABRIL 2008	Page: 1 of 1